

2008 DEMOGRAPHIC PROFILE

Wyoming County

Population: 27,994

Median Age: 41

Average Household Income: \$54,524

Per Capita Income: \$22,444

Population Age 16+

Non Labor Force
38.20%

not working nor
seeking employment

8,655

Labor Force
61.80%

employed or seeking employment

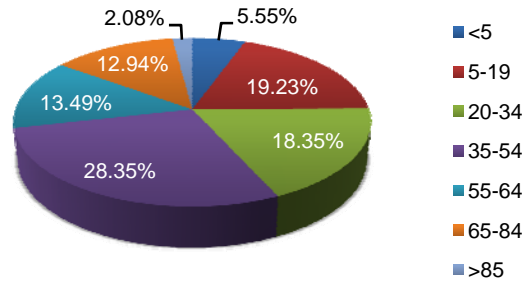
Civilian Employed
13,288

Civilian Unemployed
697

Educational Attainment

Population 25+	19,210
Less than 9th Grade	3.59%
9th to 12th No Diploma	11.96%
High School Graduate	45.60%
Some College, No Degree	16.29%
Associate Degree	6.91%
Bachelor's Degree	10.02%
Graduate or Professional Degree	5.63%
% High School Graduate +	84.45%
% Bachelor's Degree +	15.65%

Population by Age



Top Migratory Counties

	In-Migration	Out-Migration
Lackawanna, PA	254	Lackawanna, PA 303
Luzerne, PA	239	Luzerne, PA 277
Susquehanna, PA	165	Susquehanna, PA 147
Bradford, PA	79	Bradford, PA 100
Total for county	1,224	Total for county 1,286

Source: Economic Modeling Specialists, Inc., March 2009, for the 2006 time period, based on data from the Internal Revenue Service

Race and Ethnicity

American Indian or Alaska Native Population	0.16%
Asian Population	0.29%
Black Population	0.56%
Hawaiian or Pacific Islander Population	0.01%
Multi-race Population	0.60%
Other Race Population	0.17%
White Population	98.20%
Hispanic Population	1.38%
Non Hispanic Population	98.62%

Household Income

