

2008 DEMOGRAPHIC PROFILE

Tioga County

Population: 40,896

Median Age: 41

Average Household Income: \$48,147

Per Capita Income: \$19,972

Population Age 16+

Non Labor Force
40.62%

not working nor
seeking employment

13,625

Civilian Employed
18,686

Labor Force
59.38%

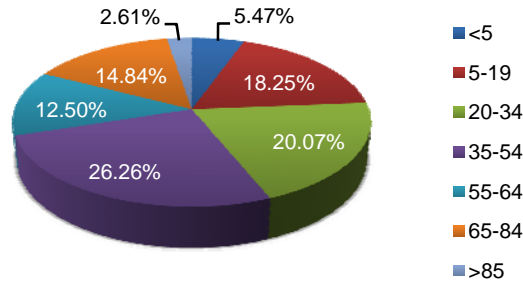
employed or seeking employment

Civilian Unemployed
1,222

Educational Attainment

Population 25+	27,991
Less than 9th Grade	4.74%
9th to 12th No Diploma	13.93%
High School Graduate	44.98%
Some College, No Degree	15.34%
Associate Degree	6.52%
Bachelor's Degree	8.70%
Graduate or Professional Degree	5.78%
% High School Graduate +	81.32%
% Bachelor's Degree +	14.48%

Population by Age



Top Migratory Counties

	In-Migration	Out-Migration	
Potter, PA	105	Steuben, NY	137
Steuben, NY	95	Bradford, PA	114
Bradford, PA	93	Potter, PA	107
Lycoming, PA	83	Lycoming, PA	67
Chemung, NY	47	Chemung, NY	52
Total for county	1,293	Total for county	1,498

Source: Economic Modeling Specialists, Inc., March 2009, for the 2006 time period, based on data from the Internal Revenue Service

Race and Ethnicity

American Indian or Alaska Native Population	0.23%
Asian Population	0.32%
Black Population	0.64%
Hawaiian or Pacific Islander Population	0.02%
Multi-race Population	0.65%
Other Race Population	0.14%
White Population	98.01%
Hispanic Population	0.72%
Non Hispanic Population	99.28%

Household Income

