

2008 DEMOGRAPHIC PROFILE

Susquehanna County

Population: 41,583

Median Age: 42

Average Household Income: \$50,852

Per Capita Income: \$21,208

Population Age 16+

Non Labor Force
39.21%

not working nor seeking employment

13,306

Labor Force
60.79%

employed or seeking employment

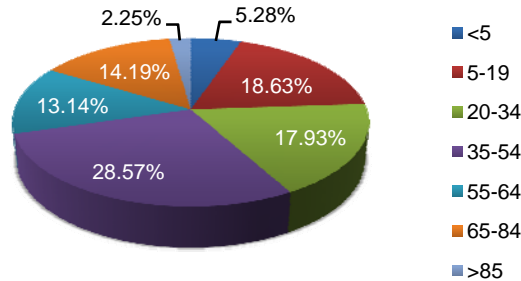
Civilian Employed
19,715

Civilian Unemployed
897

Educational Attainment

Population 25+	28,972
Less than 9th Grade	4.28%
9th to 12th No Diploma	12.51%
High School Graduate	47.56%
Some College, No Degree	15.39%
Associate Degree	6.87%
Bachelor's Degree	8.17%
Graduate or Professional Degree	5.22%
% High School Graduate +	83.21%
% Bachelor's Degree +	13.40%

Population by Age



Top Migratory Counties

	In-Migration	Out-Migration
Lackawanna, PA	319	Broome, NY 297
Broome, NY	181	Lackawanna, PA 256
Wyoming, PA	147	Wyoming, PA 165
Wayne, PA	70	Wayne, PA 57
Luzerne, PA	62	Luzerne, PA 52
Total for county	1,613	Total for county 1,540

Source: Economic Modeling Specialists, Inc., March 2009, for the 2006 time period, based on data from the Internal Revenue Service

Race and Ethnicity

American Indian or Alaska Native Population	0.15%
Asian Population	0.23%
Black Population	0.33%
Hawaiian or Pacific Islander Population	0.03%
Multi-race Population	0.62%
Other Race Population	0.20%
White Population	98.45%
Hispanic Population	1.15%
Non Hispanic Population	98.85%

Household Income

