

# 2008 DEMOGRAPHIC PROFILE

# Sullivan County

Population: 6,163

Median Age: 46

Average Household Income: \$48,608

Per Capita Income: \$22,526

## Population Age 16+

Non Labor Force  
45.19%

not working nor  
seeking employment

2,373

Labor Force  
54.81%

employed or seeking employment

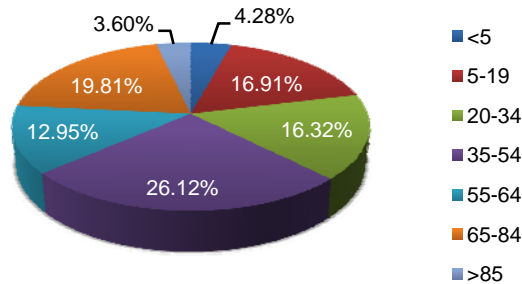
Civilian Employed  
2,618

Civilian Unemployed  
260

## Educational Attainment

Population 25+	4,406
Less than 9th Grade	5.90%
9th to 12th No Diploma	15.12%
High School Graduate	45.98%
Some College, No Degree	13.53%
Associate Degree	6.35%
Bachelor's Degree	7.44%
Graduate or Professional Degree	5.67%
% High School Graduate +	78.98%
% Bachelor's Degree +	13.12%

## Population by Age



## Top Migratory Counties

In-Migration		Out-Migration	
Bradford, PA	45	Lycoming, PA	59
Lycoming, PA	37	Bradford, PA	59
Total for county	233	Total for county	275

Source: Economic Modeling Specialists, Inc., March 2009, for the 2006 time period, based on data from the Internal Revenue Service

## Race and Ethnicity

American Indian or Alaska Native Population	0.73%
Asian Population	0.16%
Black Population	2.22%
Hawaiian or Pacific Islander Population	0.00%
Multi-race Population	0.92%
Other Race Population	0.45%
White Population	95.51%
Hispanic Population	1.69%
Non Hispanic Population	98.31%

## Household Income

